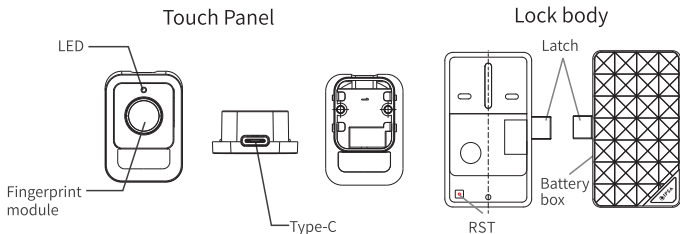


CDL05

Cabinet Digital Lock

User Manual

Brief introduction



Fingerprint device	Semiconductor fingerprint reader	Management fingerprint	2
Working temperature	-20 ~ +55°C	User fingerprint	8
Working humidity	10% ~ 85% RH	Static current	30uA
Storage temperature	-40 ~ +55°C	Dynamic current	100mA

How to operate

1. Factory default fingerprint database is empty, any fingerprint can open the lock;
2. This lock can input two types of fingerprints: management fingerprint and user fingerprint.
Fingerprint permissions: management fingerprint > user fingerprint;
3. When performing fingerprint pressing operations, be sure to fill the fingerprint pressing screen with your fingertips and make contact with the metal frame.

Lock & Unlock



➤ **Unlock**

- ① To verify your fingerprint on the lock for about 1s, the unlocking indicator light is on,
- ② The latch retracts automatically and opens within 5s.

➤ **Lock**

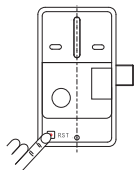
The latch will stretch out automatically after 5s.

Note:

- * Factory default fingerprint database is empty, any fingerprint can open the lock.
- * Green indicator light flashing→fingerprint verification failed, please use the added fingerprint to unlock.
- * When locked, the indicator light is red→the battery is in a dead state. Pls replace 3×AAA batteries in the battery compartment in a timely manner.

How to set fingerprint

➤ Input management fingerprint



1. When the fingerprint database is empty, short press the RST button and the green light will flash quickly, now you are ready to add fingerprint,
2. Press the fingerprint module at different positions of the fingertips to be entered, repeat the operation 6 times, and the green light goes out, fingerprint added successfully. (Management fingerprints at most: 2)

Note: * After successfully entering one management fingerprint, it will automatically exit and continue to enter the next one. The above steps need to be repeated.

➤ Input user fingerprint

One way:

1. On the premise that 2 management fingerprints have been added successfully, short press the RST button and the green indicator light will flash, now you are ready to add user fingerprint,
2. Press the user fingerprint to be entered onto the fingerprint module, repeat the operation 6 times, the green indicator light goes out, user fingerprint added successfully. (User fingerprints at most: 8)

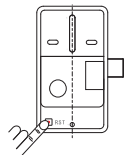
The other way:

1. Press the entered management fingerprint onto the fingerprint module, repeat the operation twice, and the green indicator light will flash, now you are ready to add user fingerprint,
2. Press the user fingerprint to be entered onto the fingerprint module, repeat the operation 6 times, the green indicator light goes out, user fingerprint added successfully. (User fingerprints at most: 8)

Note:

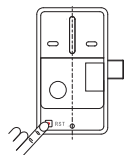
- * Management fingerprints have the function of adding user fingerprints.
- * This lock can add fingerprints at most: 10, with the first 2 being management fingerprints.
- * After added 10 fingerprints, briefly press the RST button and the green light flashes twice to indicate that the recording is full.
- * For every fingerprint input, it will automatically exit after success and continue to input the next fingerprint. The above steps need to be repeated.

► Delete all fingerprints



1. Press and hold the RST button until the green light flashes once, and all fingerprints are deleted successfully.

Restore factory settings



1. Press and hold the RST button to restore the factory settings.
2. A dedicated decoder can be inserted into the Type-C interface to clear the code and unlock it. (To be purchased from an agent)

Features

1. Low voltage

When lock is in low voltage, pls replace the battery. (Note: the lock may not work if the voltage is too low, you can connect the Type-C port with an external power supply)

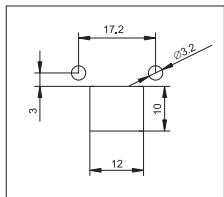
2. Battery installation

Pay attention to positive and negative terminals of the battery.

Fixing hole size & installation

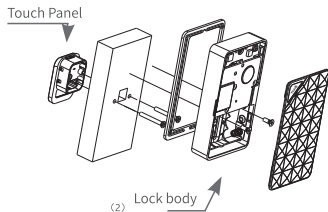
► Fixing hole size

Unit: mm



▼ Installation

*Thickness range of the wooden door: 12mm-30mm
*Thickness range of the metal door: 0.5mm-2.5mm



IPSA BUSINESS INDIA PVT. LTD.

57/1/17-18, Site - 4, Industrial Area, Sahibabad, Ghaziabad, Uttar Pradesh - 201010 INDIA.

Web : www.ipsaindia.com | E-mail : customercare@ipsaindia.com | Phone : +91 85050 10101